

CERTIFIED LAND CORNER RECORDATION

DESCRIPTION OF CORNER EVIDENCE FOUND, AND ORIGINAL RECORD (If known)

E 1/4 CORNER SECTION 26
 MARKED STONE - 3/4" PIPE BY STONE
 T. 13 N., R. 68 W., 6" FM.
 LARAMIE COUNTY, WYOMING

1987 JUN 9 PM 2 17

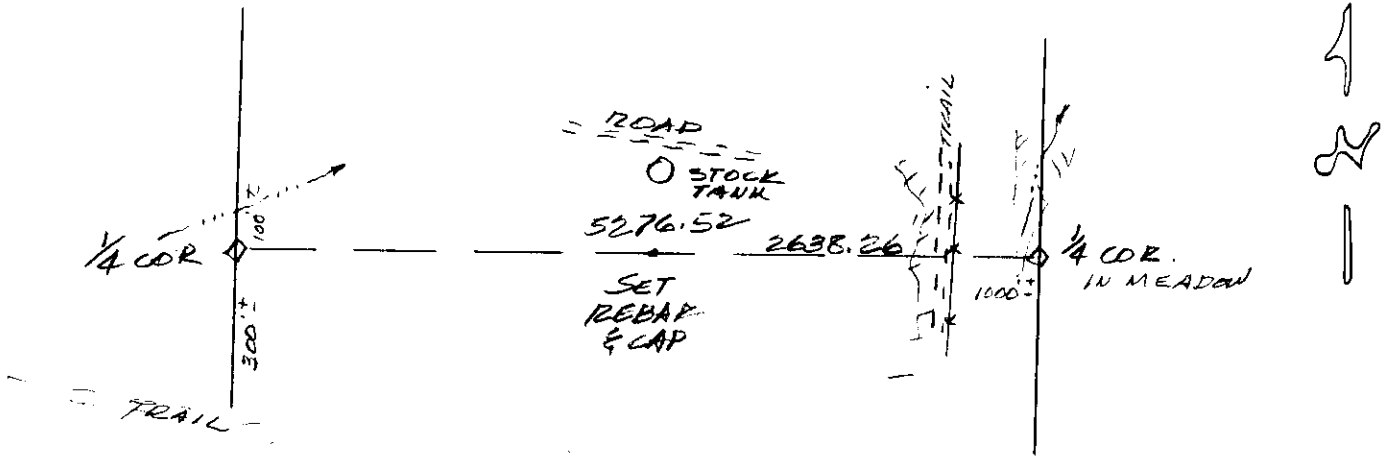
REBEKAH J.
 LARAMIE COUNTY
 CHEYENNE, WY.

029750

DESCRIPTION OF MONUMENT AND ACCESSORIES ESTABLISHED TO PERPETUATE THE ORIGINAL LOCATION OF THIS CORNER:

DISTANCE TO W 1/4 CORNER TO E 1/4 CORNER IS 5276.52
 SET POINT 2638.26 FEET WEST

SKETCH, WITH COURSE AND DISTANCE TO ADJACENT CORNER IF DETERMINED IN THIS SURVEY. (May Sketch or Paste Reproduction on Reverse Side.)



I, DONALD M. HOPKINS certify that I have carefully examined the work done on the diagrammed corner as reported on this recordation form and approve the same.

Donald M. Hopkins
 Signature of Surveyor

558
 Registration No.

STATE OF WYOMING,
 Office of Clerk and Recorder,
 County of Laramie

This "corner record" was filed for record on the 9th day of June, 1987, was noted on the cross-index plat and is assigned page No. _____, in book No. _____.

Joseph C. Whitehead
 County Official

Cross Index No. <u>T-21</u>	T. <u>13</u>	R. <u>68</u>	Mer.
_____	T. _____	R. _____	Mer.
_____	T. _____	R. _____	Mer.
_____	T. _____	R. _____	Mer.
_____	T. _____	R. _____	Mer.
_____	T. _____	R. _____	Mer.
_____	T. _____	R. _____	Mer.

BOOK 1247

671